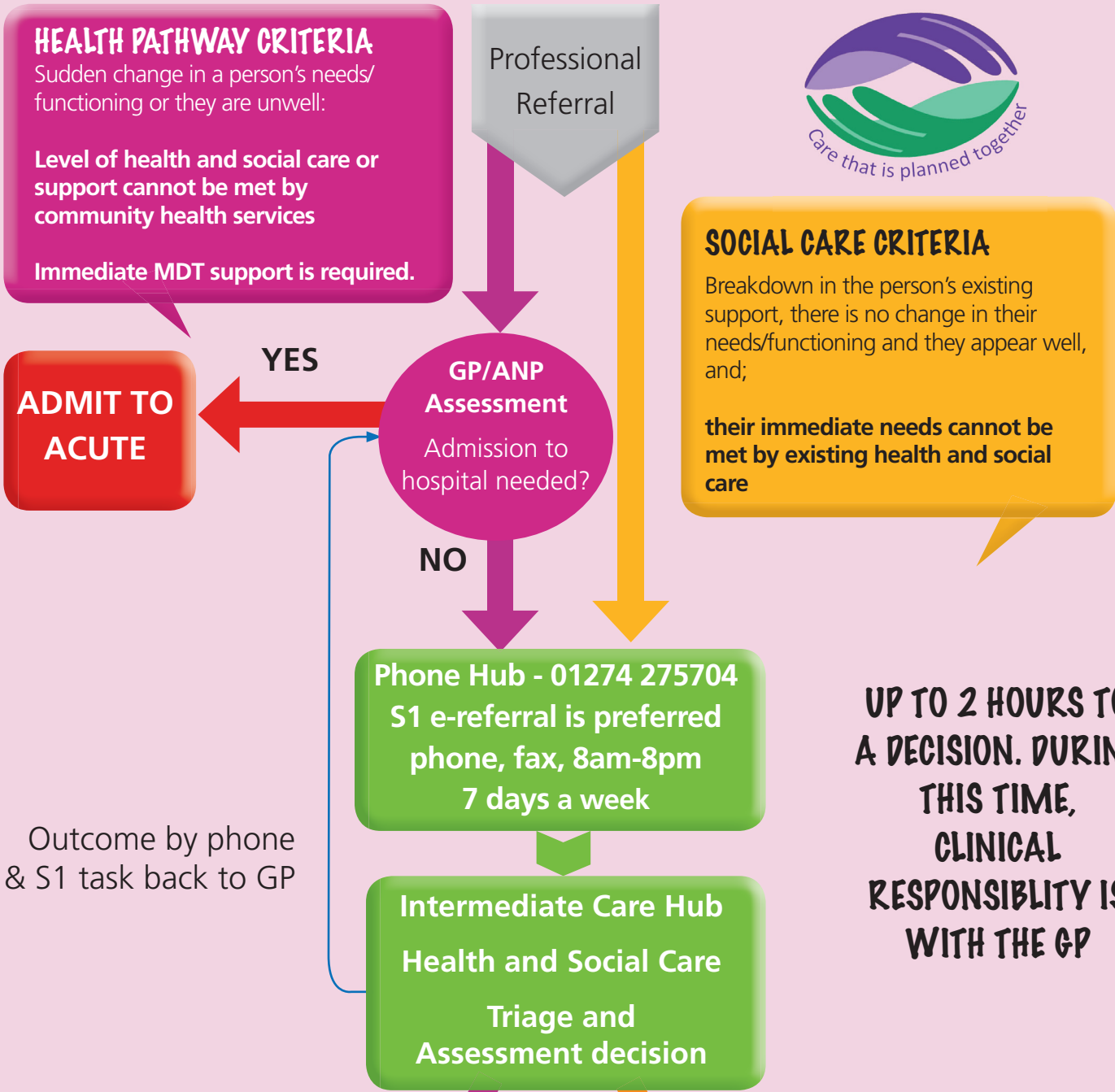


Intermediate Care in Bradford

A CRISIS HAS OCCURRED IN A PERSON'S USUAL PLACE OF RESIDENCE IN BRADFORD: PERSON IS AGED OVER 65 AND WITHOUT AN INTERVENTION WILL BE ADMITTED TO HOSPITAL TODAY



Time

CLINICAL RESPONSIBILITY WITH BTHFT CONSULTANT

Community Hospitals

TIME LIMITED DEPENDING ON NEED

Virtual Ward

CLINICAL RESPONSIBILITY REMAINS WITH GP

Social Care:
Rapid Response BEST
BEST
BEST+
Voluntary Organisations
(This is not an exhaustive list)

**LA Beds
Flexi Beds
Assessment**

TIME LIMITED DEPENDING ON NEED